

## Output Level Adjustment

### Autocom Super Pro Automatic & Logic

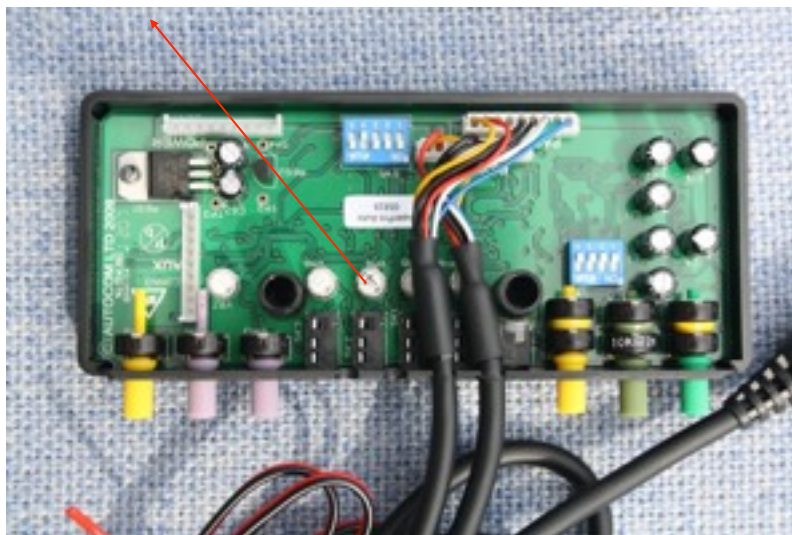
Some users have experienced a low microphone output signal from their Satellite Navigation Units, a problem which becomes evident when connecting a mobile phone via Bluetooth to the SatNav.

As a solution to this an internal adjustment can be made to the SuperPro Auto and Logic units.

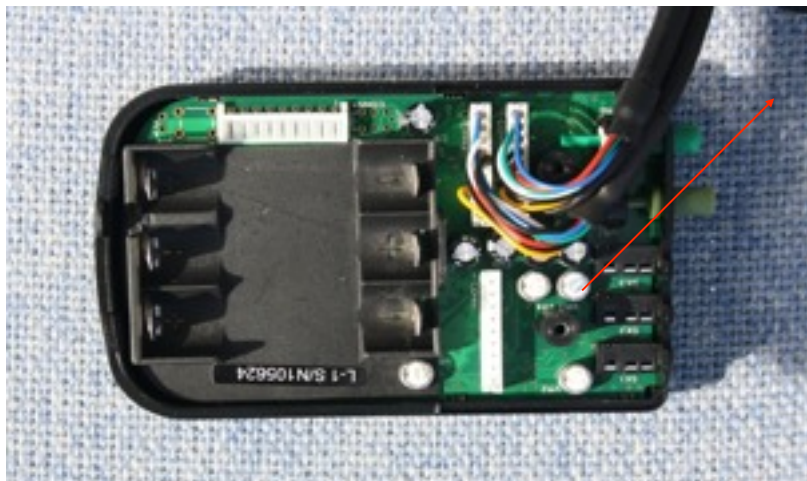
Aux 3 is the recommended input for a SatNav/Phone connection.

### How to make the Adjustment on Logic & SPA

- 1/ Remove lid from Autocom – 2 screws on the underside of the unit.
- 2/ For the SPA locate the white potentiometer labelled VR8. It is next to the AUX 3 input socket. Please see attached photo.
- 3/ Turn the control fully anticlockwise and then clockwise to the position shown in the photo. You will need a small flathead screwdriver.
- 4/ On the Logic, locate the VR3 potentiometer, turn anticlockwise and then to the position shown in the photo.



SPA



Logic